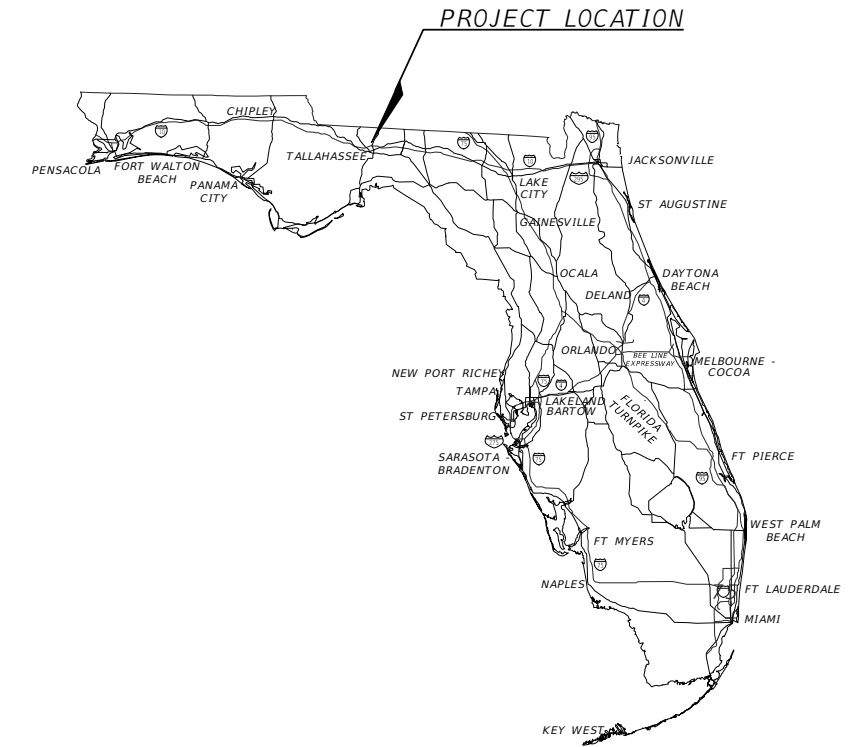


COMPONENTS OF PLAN
SET-BRIDGE PLANS

COUNTY ROAD 259 OVER SCL RAILROAD BRIDGE REPAIR PLANS BR #540062

BOARD OF COUNTY COMMISSIONERS
JEFFERSON COUNTY, FLORIDA

FINANCIAL PROJECT ID
449303-1-54-01



INDEX OF ROADWAY PLANS

SHEET NO.	SHEET DESCRIPTION
1	COVER SHEET
2	SUMMARY OF QUANTITIES
3	OVERALL PLAN VIEW
4	PLAN APPROACH SLAB 1
5	PLAN APPROACH SLAB 2
6	DETAILS



Beginning of Project
CR 259
STA. 00+00.00

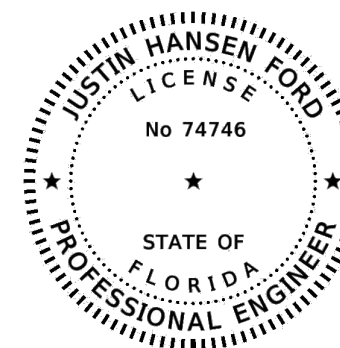
End of Project
CR 259
STA. 02+98.22

100% PLANS

ENGINEER OF RECORD:

JUSTIN HANSEN FORD, P.E.
P.E. NO.: 74746
DEWBERRY ENGINEERS INC.
20684 CENTRAL AVE. E
BLOUNTSTOWN, FL 32424

CERTIFICATE OF AUTHORIZATION NO.: 00008794



GOVERNING STANDARD PLANS:

Florida Department of Transportation, FY2021-22 Standard plans for Road and Bridge Construction and applicable Interim Revisions (Irs).

Standard Plans for Road Construction and associated Irs are available at the following website:

<http://www.fdot.gov/design/Standardplans.shtm>

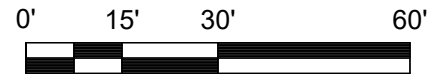
DEI PROJECT NO.	FISCAL YEAR	SHEET NO.
50152272	2022	1

ITEM NUMBER	ITEM DESCRIPTION	QUANTITY TOTAL	UNIT
101-1	MOBILIZATION	1	LS
102-1	MAINTENACE OF TRAFFIC	1	LS
110-1-1	CLEARING AND GRUBBING	1	LS
120-2-2	BORROW EXCAVATION	25	CY
121-70	FLOWABLE FILL	35	CY
305-1	BITUMINOUS CRACK AND JOINT SEALING FOR ASPHALTIC CONCRETE ROADWAY	220	LF
339-1	MISCELLANEOUS ASPHALT PAVEMENT	10	TN
350-72	CLEANING AND RESEALING JOINTS - EXISTING CONCRETE PAVEMENT	220	LF
458-1-21	BRIDGE DECK EXPANSION JOINT, REHABILITATION, POURED JOINT WITH BACKER ROD	220	LF
525-1	ASPHALTIC CONCRETE CURB (GUARDRAIL BERM)	48	LF
536-73	GUARDRAIL REMOVAL	36	LF
536-1-1	GUARDRAIL ROADWAY, GEN TL-3	36	LF
570-1-1	PERFORMANCE TURF	150	SY
570-1-2	PERFORMANCE TURF, SOD	40	SY

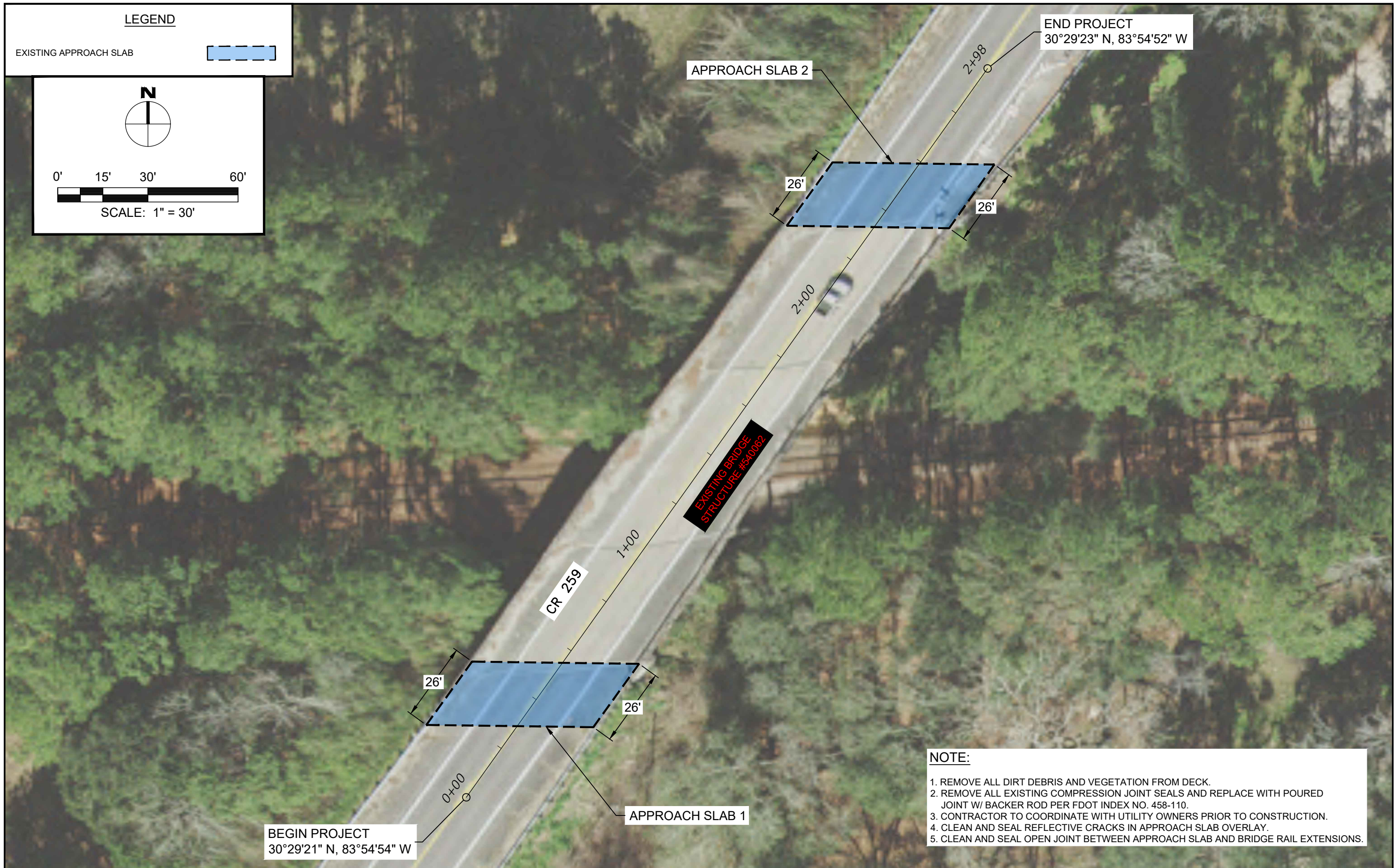
REVISIONS				JUSTIN HANSEN FORD, P.E. P.E. LICENSE NUMBER 74746 DEWBERRY 20684 CENTRAL AVENUE EAST BLOUNTSTOWN, FL 32424 CERTIFICATE OF AUTHORIZATION 00008794	CR 259 - OVER SCL RAILROAD BRIDGE REPAIR PLANS			SUMMARY OF QUANTITIES	SHEET NO.
DATE	DESCRIPTION	DATE	DESCRIPTION		ROAD NO.	COUNTY	FINANCIAL PROJECT ID		
----	----	----	----		CR 259	JEFFERSON	449303-1-54-01		2

LEGEND

EXISTING APPROACH SLAB



SCALE: 1" = 30'



NOTE:

1. REMOVE ALL DIRT DEBRIS AND VEGETATION FROM DECK.
2. REMOVE ALL EXISTING COMPRESSION JOINT SEALS AND REPLACE WITH POURED JOINT W/ BACKER ROD PER FDOT INDEX NO. 458-110.
3. CONTRACTOR TO COORDINATE WITH UTILITY OWNERS PRIOR TO CONSTRUCTION.
4. CLEAN AND SEAL REFLECTIVE CRACKS IN APPROACH SLAB OVERLAY.
5. CLEAN AND SEAL OPEN JOINT BETWEEN APPROACH SLAB AND BRIDGE RAIL EXTENSIONS.

REVISIONS				JUSTIN HANSEN FORD, P.E. P.E. LICENSE NUMBER 74746 DEWBERRY 20684 CENTRAL AVENUE EAST BLOUNTSTOWN, FL 32424 CERTIFICATE OF AUTHORIZATION 00008794	CR 259 - OVER SCL RAILROAD BRIDGE REPAIR PLANS			BRIDGE REPAIR PLAN OVERALL PLAN VIEW	SHEET NO. 3
DATE	DESCRIPTION	DATE	DESCRIPTION		ROAD NO.	COUNTY	FINANCIAL PROJECT ID		
					CR 259	JEFFERSON	449303-1-54-01		

LEGEND

EXISTING APPROACH SLAB



0' 5' 10' 20'



SCALE: 1" = 10'

CONTRACTOR SHALL FORM THE FRONT SIDE OF THE VOID ALONG THE EDGE OF THE ROADWAY. CORE THE ROADWAY ABOVE THE VOID AND FILL WITH APPROXIMATELY 1 CY OF CONCRETE GROUT.

CONTRACTOR SHALL FORM THE FRONT SIDE OF THE VOID ALONG THE EDGE OF THE ROADWAY. CORE THE ROADWAY ABOVE THE VOID AND FILL WITH APPROXIMATELY 1 CY OF CONCRETE GROUT.

CLEAN AREA OF SETTLEMENT AND PATCH WITH HOT MIX ASPHALT UNTIL FLUSH WITH SURROUNDING GRADE.

NOTE:

1. REMOVE ALL DIRT DEBRIS AND VEGETATION FROM DECK.
2. REMOVE ALL EXISTING COMPRESSION JOINT SEALS AND REPLACE WITH POURED JOINT W/ BACKER ROD PER FDOT INDEX NO. 458-110.
3. CONTRACTOR TO COORDINATE WITH UTILITY OWNERS PRIOR TO CONSTRUCTION.
4. CLEAN AND SEAL REFLECTIVE CRACKS IN APPROACH SLAB OVERLAY.
5. CLEAN AND SEAL OPEN JOINT BETWEEN APPROACH SLAB AND BRIDGE RAIL EXTENSIONS.

APPROACH SLAB 1

BEGIN PROJECT

CR 259

1+00

0+00

26'

26'

3'

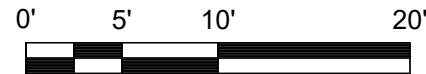
2'

REVISIONS				JUSTIN HANSEN FORD, P.E. P.E. LICENSE NUMBER 74746 DEWBERRY 20684 CENTRAL AVENUE EAST BLOUNTSTOWN, FL 32424 CERTIFICATE OF AUTHORIZATION 00008794	CR 259 - OVER SCL RAILROAD BRIDGE REPAIR PLANS			SHEET NO. 4
DATE	DESCRIPTION	DATE	DESCRIPTION		ROAD NO.	COUNTY	FINANCIAL PROJECT ID	
					CR 259	JEFFERSON	449303-1-54-01	

**BRIDGE REPAIR PLAN
APPROACH SLAB 1**

LEGEND

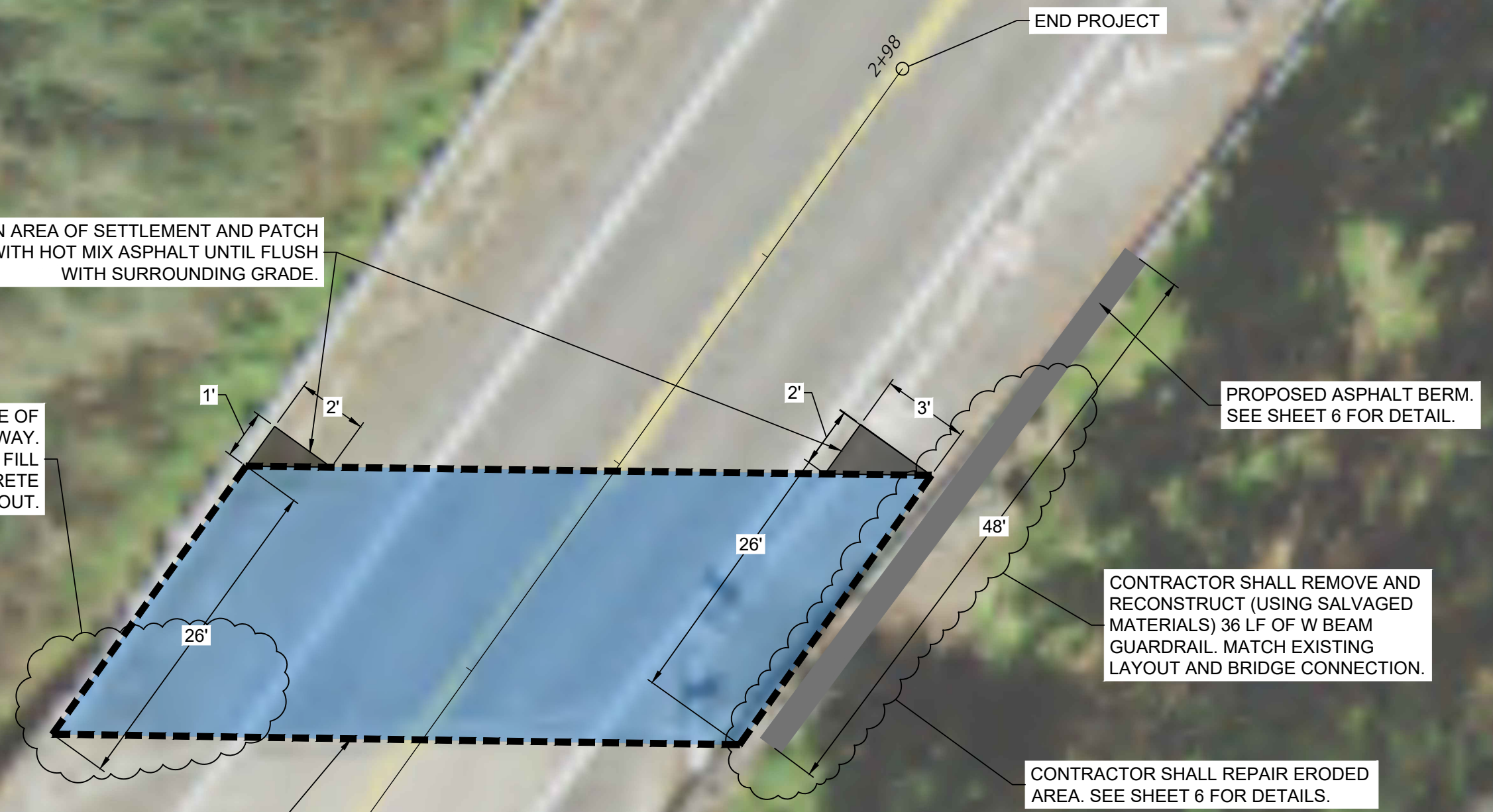
EXISTING APPROACH SLAB



SCALE: 1" = 10'

CLEAN AREA OF SETTLEMENT AND PATCH WITH HOT MIX ASPHALT UNTIL FLUSH WITH SURROUNDING GRADE.

CONTRACTOR SHALL FORM THE FRONT SIDE OF THE VOID ALONG THE EDGE OF THE ROADWAY. CORE THE ROADWAY ABOVE THE VOID AND FILL WITH APPROXIMATELY 10 CY OF CONCRETE GROUT.



PROPOSED ASPHALT BERM. SEE SHEET 6 FOR DETAIL.

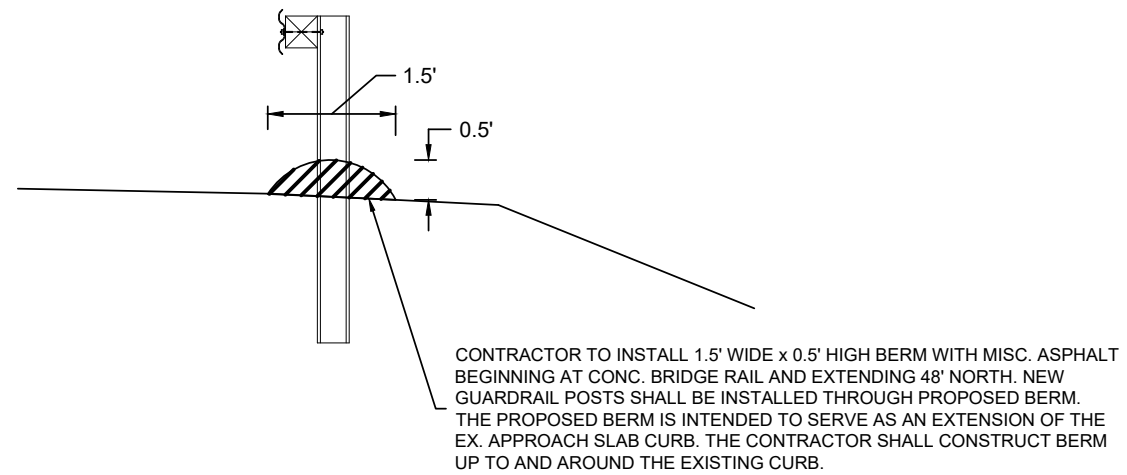
CONTRACTOR SHALL REMOVE AND RECONSTRUCT (USING SALVAGED MATERIALS) 36 LF OF W BEAM GUARDRAIL. MATCH EXISTING LAYOUT AND BRIDGE CONNECTION.

CONTRACTOR SHALL REPAIR ERODED AREA. SEE SHEET 6 FOR DETAILS.

- NOTE:**
1. REMOVE ALL DIRT DEBRIS AND VEGETATION FROM DECK.
 2. REMOVE ALL EXISTING COMPRESSION JOINT SEALS AND REPLACE WITH POURED JOINT W/ BACKER ROD PER FDOT INDEX NO. 458-110.
 3. CONTRACTOR TO COORDINATE WITH UTILITY OWNERS PRIOR TO CONSTRUCTION.
 4. CLEAN AND SEAL REFLECTIVE CRACKS IN APPROACH SLAB OVERLAY.
 5. CLEAN AND SEAL OPEN JOINT BETWEEN APPROACH SLAB AND BRIDGE RAIL EXTENSIONS.

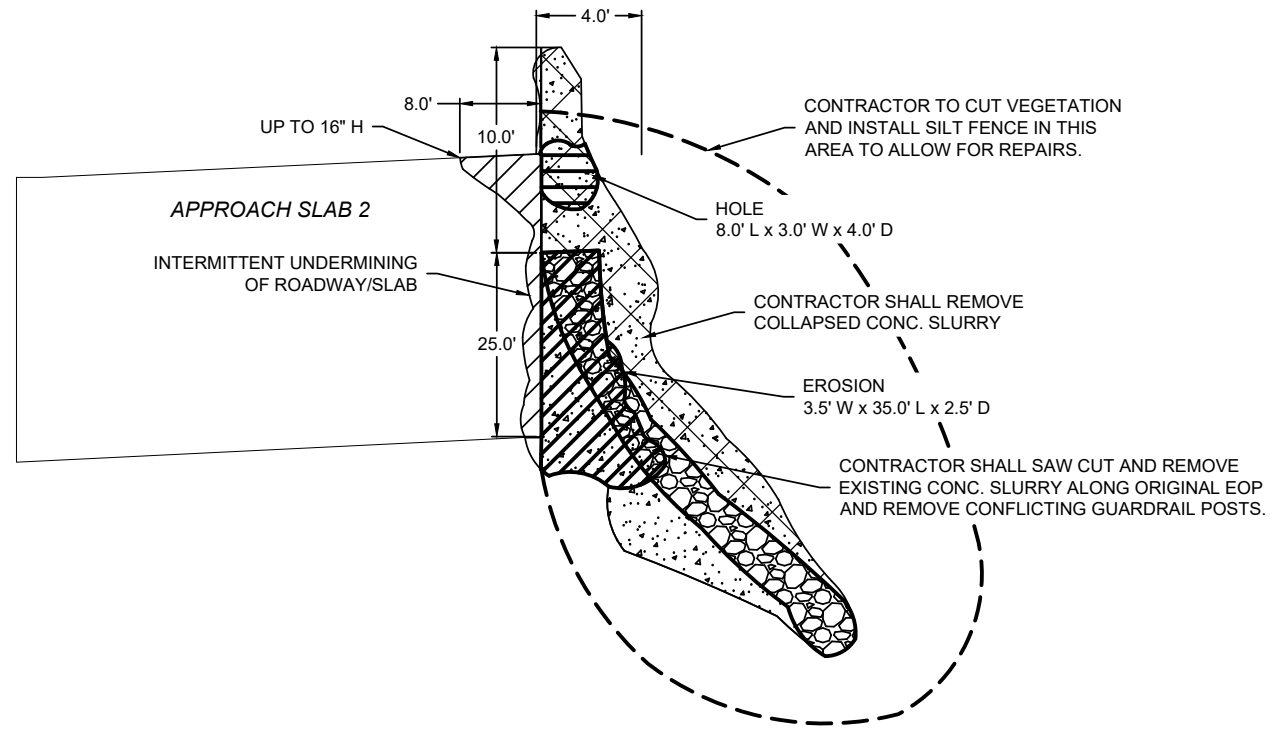
APPROACH SLAB 2

REVISIONS				JUSTIN HANSEN FORD, P.E. P.E. LICENSE NUMBER 74746 DEWBERRY 20684 CENTRAL AVENUE EAST BLOUNTSTOWN, FL 32424 CERTIFICATE OF AUTHORIZATION 00008794	CR 259 - OVER SCL RAILROAD BRIDGE REPAIR PLANS			BRIDGE REPAIR PLAN APPROACH SLAB 2	SHEET NO. 5
DATE	DESCRIPTION	DATE	DESCRIPTION		ROAD NO.	COUNTY	FINANCIAL PROJECT ID		
					CR 259	JEFFERSON	449303-1-54-01		



CONTRACTOR TO INSTALL 1.5' WIDE x 0.5' HIGH BERM WITH MISC. ASPHALT BEGINNING AT CONC. BRIDGE RAIL AND EXTENDING 48' NORTH. NEW GUARDRAIL POSTS SHALL BE INSTALLED THROUGH PROPOSED BERM. THE PROPOSED BERM IS INTENDED TO SERVE AS AN EXTENSION OF THE EX. APPROACH SLAB CURB. THE CONTRACTOR SHALL CONSTRUCT BERM UP TO AND AROUND THE EXISTING CURB.

DETAIL - GUARDRAIL WITH ASPHALT BERM
SCALE: N.T.S.



CONTRACTOR TO CUT VEGETATION AND INSTALL SILT FENCE IN THIS AREA TO ALLOW FOR REPAIRS.

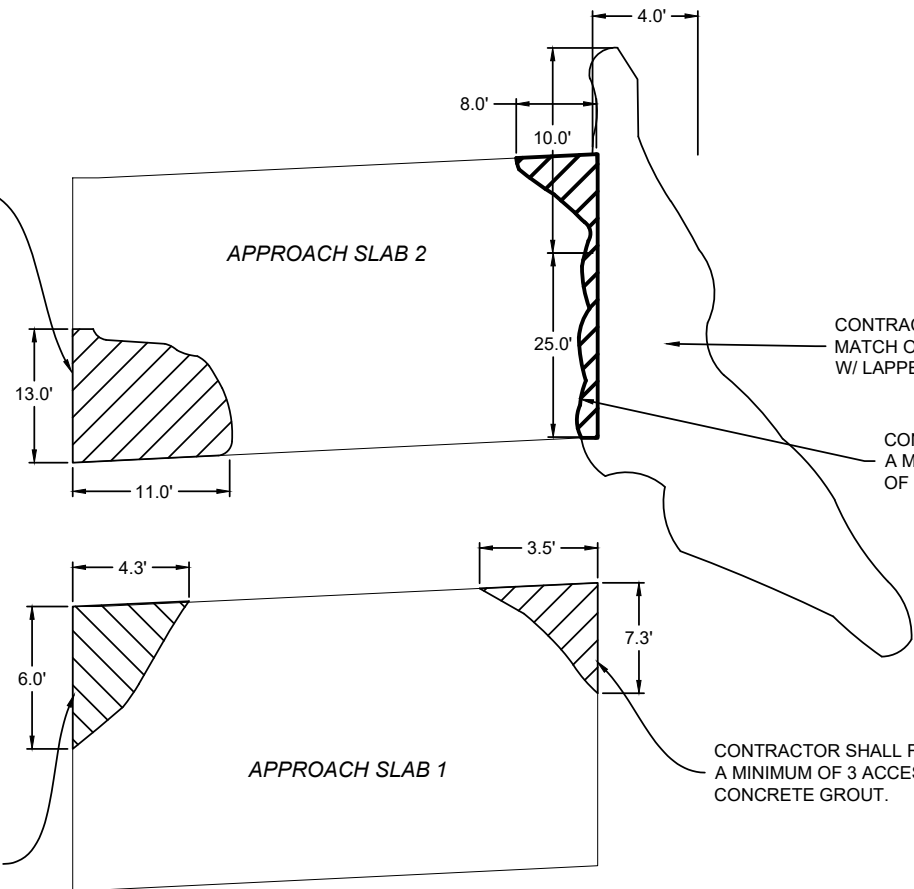
CONTRACTOR SHALL REMOVE COLLAPSED CONC. SLURRY

EROSION 3.5' W x 35.0' L x 2.5' D

CONTRACTOR SHALL SAW CUT AND REMOVE EXISTING CONC. SLURRY ALONG ORIGINAL EOP AND REMOVE CONFLICTING GUARDRAIL POSTS.

DETAIL - EROSION DEMOLITION PLAN
SCALE: N.T.S.

CONTRACTOR SHALL FORM OUTSIDE EDGE OF ROADWAY UNDERMINING AND CORE A MINIMUM OF 3 ACCESS POINTS TO ALLOW FOR INSTALLATION OF APPROX. 10 CY OF CONCRETE GROUT.



CONTRACTOR SHALL BACKFILL ERODED AREA WITH SELECT FILL TO MATCH ORIGINAL SCOPE COMPACTED IN 12" LIFTS AND STABILIZED W/ LAPPED AND PINNED SOD OVER ALL DISTURBED AREAS.

CONTRACTOR SHALL FORM OUTSIDE EDGE OF ROADWAY UNDERMINING AND CORE A MINIMUM OF 3 ACCESS POINTS TO ALLOW FOR INSTALLATION OF APPROX. 23 CY OF CONCRETE GROUT.

CONTRACTOR SHALL FORM OUTSIDE EDGE OF ROADWAY UNDERMINING AND CORE A MINIMUM OF 3 ACCESS POINTS TO ALLOW FOR INSTALLATION OF APPROX. 1 CY OF CONCRETE GROUT.

CONTRACTOR SHALL FORM OUTSIDE EDGE OF ROADWAY UNDERMINING AND CORE A MINIMUM OF 3 ACCESS POINTS TO ALLOW FOR INSTALLATION OF APPROX. 1 CY OF CONCRETE GROUT.

DETAIL - EROSION REPAIR
SCALE: N.T.S.

REVISIONS				JUSTIN HANSEN FORD, P.E. P.E. LICENSE NUMBER 74746 DEWBERRY 20684 CENTRAL AVENUE EAST BLOUNTSTOWN, FL 32424 CERTIFICATE OF AUTHORIZATION 00008794	CR 259 - OVER SCL RAILROAD BRIDGE REPAIR PLANS			BRIDGE REPAIR DETAILS	SHEET NO. 6
DATE	DESCRIPTION	DATE	DESCRIPTION		ROAD NO.	COUNTY	FINANCIAL PROJECT ID		
					CR 259	JEFFERSON	449303-1-54-01		